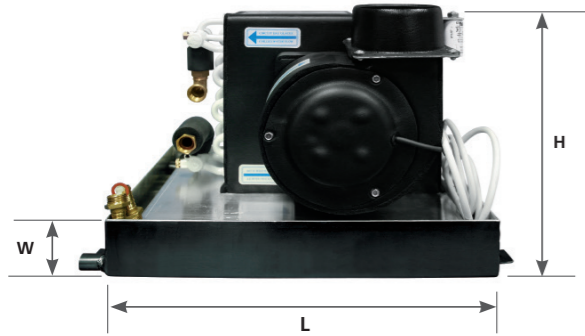


Air handlers



All air handlers now with insulated condensation trays!

Compact air handlers

Model	Air flow	Amp draw * (Running Watts)	Ø Hose ring	Net weight	Ø Chilled water hose (mm)	Performance	Dimensions (H x L x W)	Part no. 230 V	Part no. 115 V
AH-CO05	275 m³/h 165 cfm	0.35 (80)	100 mm 3.9 inch	5 kg 11 lbs	16	4,500 BTU/h 1.3 kW	265 x 340 x 260 mm 10.4 x 13.4 x 10.2 inch	WBCL000744XX0B	WBCL006300000B
AH-CO06	275 m³/h 165 cfm	0.35 (80)	100 mm 3.9 inch	7.5 kg 16.5 lbs	16	6,000 BTU/h 1.7 kW	291 x 444 x 259 mm 11.5 x 17.5 x 10.2 inch	WBCL000745XX0B	WBCL006301000B
AH-CO09	430 m³/h 253 cfm	0.57 (130)	100 mm 3.9 inch	9 kg 20 lbs	16	9,000 BTU/h 2.6 kW	334 x 484 x 289 mm 13.1 x 19.1 x 11.4 inch	WBCL000746XX0B	WBCL006302000B
AH-CO12	500 m³/h 300 cfm	0.65 (150)	125 mm 4.9 inch	9.5 kg 21 lbs	16	12,000 BTU/h 3.5 kW	353 x 484 x 289 mm 13.9 x 19.1 x 11.4 inch	WBCL000747XX0B	WBCL006303000B
AH-CO16	625 m³/h 368 cfm	0.87 (200)	125 mm 4.9 inch	12.5 kg 27.5 lbs	16	16,000 BTU/h 4.6 kW	368 x 559 x 289 mm 14.5 x 22.0 x 11.4 inch	WBCL000748XX0B	WBCL006304000B
AH-CO20	625 m³/h 368 cfm	0.87 (200)	125 mm 4.9 inch	14 kg 31 lbs	20	20,000 BTU/h 5.6 kW	403 x 559 x 289 mm 15.9 x 22.0 x 11.4 inch	WBCL000790XX0B	WBCL006305000B
AH-CO24	2 x 500 m³/h 2 x 300 cfm	1.3 (300)	2 x 125 mm 2 x 4.9 inch	25 kg 55 lb	20	24,000 BTU/h 7 kW	403 x 621 x 289 mm 15.9 x 24.4 x 11.4 inch	WBCL000329XX0B	WBCL006306000B
AH-CO30	2 x 550 m³/h 2 x 324 cfm	1.7 (400)	2 x 125 mm 2 x 4.9 inch	24 kg 53 lb	20	30,000 BTU/h 8.8 kW	403 x 707 x 289 mm 15.9 x 27.8 x 11.4 inch	WBCL000330XX0B	
AH-CO48	2 x 900 m³/h 2 x 530 cfm	2.7 (620)	2 x 125 mm 2 x 4.9 inch	40 kg 88 lbs	20	48,000 BTU/h 14 kW	489 x 974 x 389 mm 19.3 x 38.3 x 15.3 inch	WBCL000789XX0B	

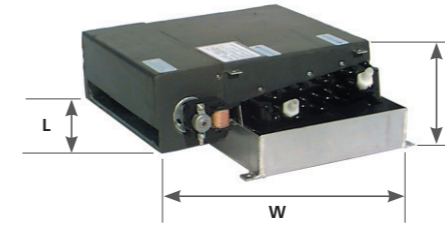
* has to be doubled for 115V versions

Note: All Webasto air handlers are optionally available with electric heating elements for superior heating performance independent from chiller unit.

Electric heating capacities are

Cooling capacity	Electric heating capacity
4.000 – 6.000 BTU/h	500 W
9.000 – 12.000 BTU/h	1000 W
16.000 – 20.000 BTU/h	1.500 W
24.000 – 30.000 BTU/h	2.250 W
48.000 BTU/h	4.000 W

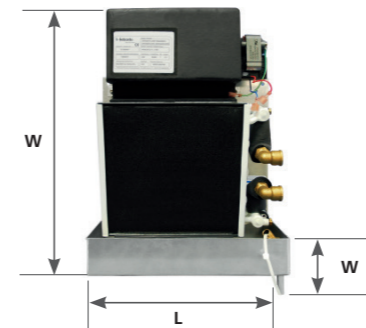
Air handlers



Cross flow air handlers / H

Model	Air flow	Amp draw * (Running Watts)	Air output dimensions		Net weight	Ø Chilled water hose (mm)	Performance	Dimensions (H x L x W)	Part no. 230 V	Part no. 115 V
			height	length						
AH-TH04	150 m³/h 88 cfm	0.13 (30)	40 mm 1.6 inch	180 mm 7.1 inch	5 kg 11 lbs	16	4,000 BTU/h 1.1 kW	176 x 441 x 343 mm 6,9 x 17,4 x 13,5 inch	WBCL000750XX0B	WBCL00631300XB
AH-TH06	190 m³/h 112 cfm	0.17 (40)	40 mm 1.6 inch	240 mm 9.4 inch	7 kg 15.5 lbs	16	6,000 BTU/h 1.7 kW	176 x 441 x 393 mm 6,9 x 17,4 x 15,5 inch	WBCL000752XX0B	WBCL00631200XB
AH-TH09	250 m³/h 147 cfm	0.2 (46)	40 mm 1.6 inch	302 mm 11.9 inch	8 kg 18 lbs	16	9,000 BTU/h 2.6 kW	176 x 467 x 442 mm 6,9 x 18,4 x 17,4 inch	WBCL000753XX0B	WBCL00631100XB
AH-TH12	250 m³/h 147 cfm	0.2 (46)	40 mm 1.6 inch	302 mm 11.9 inch	9 kg 20 lbs	16	12,000 BTU/h 3.5 kW	176 x 518 x 442 mm 6,9 x 20,4 x 17,4 inch	WBCL000765XX0B	WBCL00631000XB

* has to be doubled for 115V versions

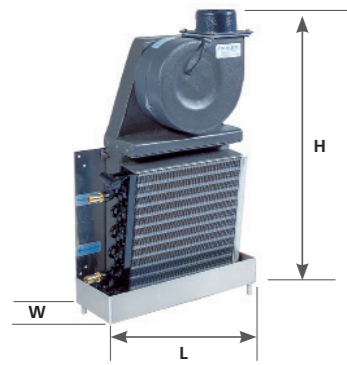


Cross flow air handlers / V

Model	Air flow	Amp draw * (Running Watts)	Air output dimensions		Net weight	Ø Chilled water hose (mm)	Performance	Dimensions (H x L x W)	Part no. 230 V	Part no. 115 V
			height	length						
AH-TV04	150 m³/h 88 cfm	0.13 (30)	180 mm 7.1 inch	40 mm 1.6 inch	5 kg 11 lbs	16	4,000 BTU/h 1.1 kW	472 x 355 x 157 mm 18,6 x 14,0 x 6,2 inch	WBCL000760XX0B	WBCL00635400XB
AH-TV06	190 m³/h 112 cfm	0.17 (40)	240 mm 9.4 inch	40 mm 1.6 inch	7 kg 16.5 lbs	16	6,000 BTU/h 1.7 kW	492 x 405 x 162 mm 19,4 x 15,9 x 6,4 inch	WBCL000762XX0B	WBCL00635500XB
AH-TV09	250 m³/h 147 cfm	0.2 (46)	302 mm 11.9 inch	40 mm 1.6 inch	8.5 kg 19 lbs	16	9,000 BTU/h 2.6 kW	502 x 456 x 157 mm 19,8 x 18,0 x 6,2 inch	WBCL000763XX0B	WBCL00635600XB
AH-TV12	250 m³/h 147 cfm	0.2 (46)	302 mm 11.9 inch	40 mm 1.6 inch	9.5 kg 21 lbs	16	12,000 BTU/h 3.5 kW	553 x 456 x 163 mm 21,8 x 18,0 x 6,4 inch	WBCL000766XX0B	WBCL00635700XB

* has to be doubled for 115V versions

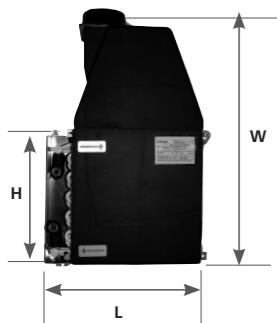
Air handlers



SlimLine/V air handlers

Model	Air flow	Amp draw * (Running Watts)	Ø Hose ring	Net weight	Ø Chilled water hose (mm)	Performance	Dimensions (H x L x W)	Part no. 230 V	Part no. 115 V
AH-SV05	275 m³/h 165 cfm	0.35 (80)	100 mm 3.9 inch	6.5 kg 14.5 lbs	16	4,500 BTU/h 1.3 kW	619 x 355 x 157 mm 24,4 x 14,0 x 6,2 inch	WBCL000740XX0B	WBCL006350000B
AH-SV06	275 m³/h 165 cfm	0.35 (80)	100 mm 3.9 inch	8 kg 18 lbs	16	6,000 BTU/h 1.7 kW	639 x 405 x 162 mm 25,2 x 15,9 x 6,4 inch	WBCL000741XX0B	WBCL006351000B
AH-SV09	430 m³/h 253 cfm	0.57 (130)	100 mm 3.9 inch	10 kg 22 lbs	16	9,000 BTU/h 2.6 kW	704 x 456 x 172 mm 27,7 x 18,0 x 6,8 inch	WBCL000742XX0B	WBCL006352000B
AH-SV12	500 m³/h 300 cfm	0.65 (150)	125 mm 4.9 inch	11 kg 24.5 lbs	16	12,000 BTU/h 3.5 kW	755 x 456 x 172 mm 29,7 x 18,0 x 6,8 inch	WBCL000743XX0B	WBCL006353000B
AH-SV16	625 m³/h 368 cfm	0.87 (200)	125 mm 4.9 inch	15 kg 33 lbs	16	16,000 BTU/h 4.6 kW	776 x 524 x 218 mm 30,6 x 20,6 x 8,6 inch	WBCL000791XX0B	WBCL006360000B
AH-SV20	625 m³/h 368 cfm	0.87 (200)	125 mm 4.9 inch	16 kg 35.5 lbs	20	20,000 BTU/h 5.6 kW	823 x 534 x 218 mm 32,4 x 21,0 x 8,6 inch	WBCL000792XX0B	WBCL006361000B
AH-SV24	2 x 500 m³/h 2 x 300 cfm	1.3 (300)	2 x 125 mm 2 x 4.9 inch	30 kg 66 lbs	20	24,000 BTU/h 7 kW	788 x 579 x 227 mm 31,0 x 22,8 x 8,9 inch	WBCL000793XX0B	WBCL006362000B

* has to be doubled for 115V versions



SlimLine/H air handlers

Model	Air flow	Amp draw * (Running Watts)	Ø Hose ring	Net weight	Ø Chilled water hose (mm)	Performance	Dimensions (H x L x W)	Part no. 230 V	Part no. 115 V
AH-SH05	275 m³/h 165 cfm	0.35 (80)	100 mm 3.9 inch	7 kg 15.5 lbs	16	4,500 BTU/h 1.3 kW	175 x 343 x 588 mm 6,9 x 13,5 x 23,1 inch	WBCL000950XX0B	WBCL006370000B
AH-SH06	275 m³/h 165 cfm	0.35 (80)	100 mm 3.9 inch	8 kg 18 lbs	16	6,000 BTU/h 1.7 kW	175 x 393 x 588 mm 6,9 x 15,5 x 23,1 inch	WBCL000951XX0B	WBCL006371000B
AH-SH09	430 m³/h 253 cfm	0.57 (130)	100 mm 3.9 inch	10 kg 22 lbs	16	9,000 BTU/h 2.6 kW	175 x 442 x 669 mm 6,9 x 17,4 x 26,3 inch	WBCL000952XX0B	WBCL006372000B
AH-SH12	500 m³/h 300 cfm	0.65 (150)	125 mm 4.9 inch	11 kg 24.5 lbs	16	12,000 BTU/h 3.5 kW	175 x 442 x 720 mm 6,9 x 17,4 x 28,3 inch	WBCL000953XX0B	WBCL006373000B
AH-SH16	625 m³/h 368 cfm	0.87 (200)	125 mm 4.9 inch	15 kg 33 lbs	16	16,000 BTU/h 4.6 kW	242 x 507 x 756 mm 9,5 x 20,0 x 29,8 inch	WBCL000954XX0B	WBCL006374000B
AH-SH20	625 m³/h 368 cfm	0.87 (200)	125 mm 4.9 inch	16 kg 35.5 lbs	20	20,000 BTU/h 5.6 kW	242 x 520 x 811 mm 9,5 x 20,5 x 31,9 inch	WBCL000955XX0B	WBCL006375000B
AH-SH24	2 x 500 m³/h 2 x 300 cfm	1.3 (300)	2 x 125 mm 2 x 4.9 inch	30 kg 66 lbs	20	24,000 BTU/h 7 kW	254 x 565 x 775 mm 10,0 x 22,2 x 30,5 inch	WBCL000956XX0B	WBCL006376000B

* has to be doubled for 115V versions

Air handlers

Air handlers accessories

The electronic silencer

- Significant reduction of blower noise, making the air handler more silent than a whisper
- Works with all our air handler models due to a simple integration into the power supply
- Easy to install and retrofit as an upgrade
- Allows fine-tuning of installed applications where necessary
- Further noise reduction can be obtained by using our new extra-silent air ducting



SEE PAGE 115

Additional components

Description	Part no.
(1) Remote bleeder kit Adaptor kit for easy bleeding of the air handler	WBCL010125D
(2) Electronic silencer: to be mounted afterwards for significant reduction of noise impact suitable for 4.5 to 6,000 BTU/h	WBCL010160C
(2) Electronic silencer to be mounted afterwards for significant reduction of noise impact suitable for 9 to 12,000 BTU/h	WBCL010161C
(2) Electronic silencer to be mounted afterwards for significant reduction of noise impact suitable for 16 to 24,000 BTU/h	WBCL010162C



Antisplash option

Webasto offers the widest range of air handlers with plenty of options. For clear identification when ordering, please use the following codification: **WBCL000752 X X X B**

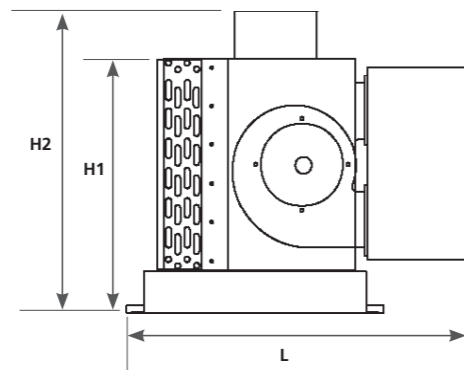
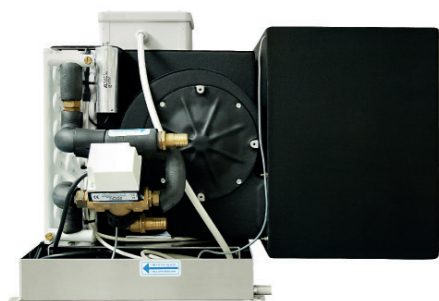
Identifies 3-way valve option*	Identifies electric heating option*	Identifies Antisplash option and blower position option for Cross Flow models
0 = without valve 1 = with valve	0 = without heating 1 = with heating	0 = without Antisplash and standard blower position 1 = without Antisplash and lateral blower position 2 = with Anti-splash and standard blower position 3 = with Anti-splash and lateral blower position
Example: WBCL000752000 = standard unit	Example: WBCL000752010 = unit equipped with electric heating element	Example: WBCL000762001 = unit without Antisplash but with lateral blower position
WBCL000752100 = unit with 3-way valve mounted	WBCL000752110 = unit equipped with 3-way valve and electric heating element	WBCL000762113 = unit equipped with 3-way-valve, electric heating element, antisplash and lateral blower position

* Only available for 230 V air handler versions

Fresh air and air extraction units

Features and functioning principles

- Regulate fresh-air entry into the vessel by temperature differential outside/inside and combined air extraction control
- Basic regulation by adjustable temperature differential outside/inside with programmable extreme limits and short cycle limits
- 2-stage integrated reheat (AC electrical) provided
- Electronic controller provides two separate blower outlets: one for fresh-air input and one for extraction air out. Different speed settings possible for both outlets. All speed settings including the maximum speed completely re-programmable. A manual control for the speed is possible
- Special flow regulators allow easy and precise balancing of outputs per volume
- Integrated Solenoid 3-way valve control
- Special start-up procedure to eliminate residual moisture in system
- Three temperature read-outs:
 - Outside air temperature
 - Chilled water circuit temperature
 - Treated air input temperature
- Air flow regulators to be specified according to application



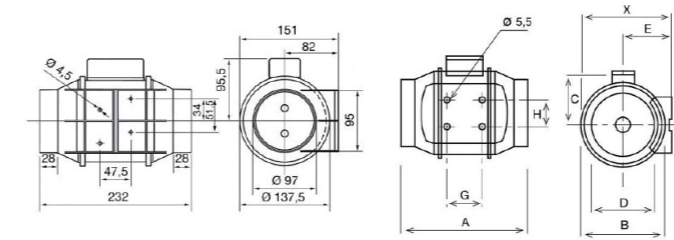
Fresh air unit	Performance	Air flow	Electronic heating capacity	Length (L)	Height (H1)	Height (H2)	Depth (D)	Weight	Part no.
Fresh Air 24	24,000 BTU/h 7 kW	900 m ³ /h 530 cfm	2 x 1000 W	700 mm 27.6 inch	430 mm 16.9 inch	540 mm 21.3 inch	585 mm 23 inch	35 kg 77 lbs	WBCL005241B
Fresh Air 24 SP	24,000 BTU/h 7 kW	1,800 m ³ /h 1,060 cfm	2 x 1000 W	700 mm 27.6 inch	430 mm 16.9 inch	540 mm 21.3 inch	585 mm 23 inch	35 kg 77 lbs	WBCL005242B
Fresh Air 48	48,000 BTU/h 14 kW	1,800 m ³ /h 1,060 cfm	4 x 1000 W	850 mm 33.5 inch	512 mm 20.2 inch	565 mm 22.2 inch	925 mm 36.41 inch	45 kg 100 lbs	WBCL005240B
Fresh Air 2 x 24	48,000 BTU/h 14 kW	1,800 m ³ /h 1,060 cfm	2 x 1000 W	940 mm 37 inch	490 mm 19.3 inch	570 mm 22.4 inch	620 mm 24.4 inch	48 kg 106 lbs	WBCL000218B

Air extraction unit	Performance	Air flow	Electronic heating capacity	Length (L)	Height (H1)	Height (H2)	Depth (D)	Weight	Part no.
Extract 900	–	900 m ³ /h 530 cfm	–	515 mm 20.3 inch	435 mm 17.1 inch	–	585 mm 23 inch	18 kg 40 lbs	WBCL000216
Extract 1800	–	1,800 m ³ /h 1,060 cfm	–	515 mm 20.3 inch	435 mm 17.1 inch	–	615 mm 24.2 inch	21 kg 46 lbs	WBCL000219

Blower modules and air flow regulators

Inline blower modules

- Provide fresh air to or extract air from the cabins
- Special fan design provides a high air flow at low noise
- Low electrical power consumption
- Removable engine body allows easy maintenance
- Speed controllable motor, two speed, Class B, IP44



Model 160

Model 250 & 350

Model	X	A	Ø B	C	Ø D	E	F	G	H
250	188	303	176	115	97	100	90	80	60
350	188	258	176	115	123	100	90	80	60

Model	Speed level	Speed (r.p.m.)	Electrical power consumption (W)	Air flow at free discharge	Maximum operating temperature	Sound pressure level* (dB(A))	Power supply	Ø Duct	Weight	Part no.
Inline extractor blower 160	II	2,500	20	180 m ³ /h, 106 cfm	40	24	~230 V 50 Hz	100 mm 4 inch	1.4 kg 3.1 lbs	WBCL010152A
	I	2,200	12	140 m ³ /h, 82 cfm	40	21				
Inline extractor blower 250	II	2,200	24	240 m ³ /h, 141 cfm	40	31	~230 V 50 Hz	100 mm 4 inch	2.0 kg 4.4 lbs	WBCL010157A
	I	1,850	18	180 m ³ /h, 106 cfm	40	26				
Inline extractor blower 350	II	2,250	30	360 m ³ /h, 212 cfm	40	33	~230 V 50 Hz	125 mm 5 inch	2.0 kg 4.4 lbs	WBCL010158A
	I	1,900	22	280 m ³ /h, 165 cfm	40	28				
Inline extractor blower 500	II	2,500	50	580 m ³ /h, 341 cfm	60	33	~230 V 50 Hz	150 mm 6 inch	2.7 kg 5.9 lbs	WBCL10229A
	I	1,900	44	430 m ³ /h, 253 cfm	60	29				

* Sound pressure level radiated at 3 meters at free air conditions with rigid ducts at the inlet and at the outlet

Air flow regulators

- Independent regulation of desired fresh-/extract air flow
- Eliminates the influence of alternating back pressure, caused by e.g. blocked air filters
- Continuous air flow ensures high comfort inside the cabin
- No electrical or pneumatic wiring
- Direct insertion into the air duct, which allows an easy application



Model	Ø D of ducting	Air flow limit	Part. No
Air Flow Regulator 15	80 mm, 3.1 inch	15 m ³ /h, 8.5 cfm	WBCL005243
Air Flow Regulator 30	80 mm, 3.1 inch	30 m ³ /h, 17.5 cfm	WBCL005244
Air Flow Regulator 45	80 mm, 3.1 inch	45 m ³ /h, 26.5 cfm	WBCL005245
Air Flow Regulator 60	80 mm, 3.1 inch	60 m ³ /h, 35 cfm	WBCL005246
Air Flow Regulator 90	100 mm, 4 inch	90 m ³ /h, 53 cfm	WBCL005247
Air Flow Regulator 120	125 mm, 5 inch	120 m ³ /h, 70.5 cfm	WBCL005248
Air Flow Regulator 160	125 mm, 5 inch	160 m ³ /h, 94 cfm	WBCL005249