

# Telescopic Shade 2500

Customizable Sunshade Solution



## Extend your time on the water

Developed to keep you protected from the sun and extend your day on the water, the Webasto Telescopic Shade is the newest addition to Webasto's impressive, market-leading marine roof line up.

Our electric-powered retractable sunshade creates the perfect canopy for passengers, while ensuring a smooth and robust operation that can be enjoyed both while anchored or motoring. It can also be installed in tandem with one of our other roof systems. The Telescopic Shade system is an excellent solution for creating additional on-board comfort.

For an optimal fit on the boat, the Telescopic Shade can be ordered to specific dimensions up to a fabric width of 8 feet (2500 mm). There are also four trend fabric colors to choose from, with additional colors available.

The overall design, in combination with the high-gloss polished stainless steel tubes and Marine-grade material, makes this a true marine solution.

**NEW**

For full integration of the Telescopic Shade, Webasto offers a custom cover plate. In retracted position the shade system is completely hidden and protected from the elements.

## Key Benefits at a glance:

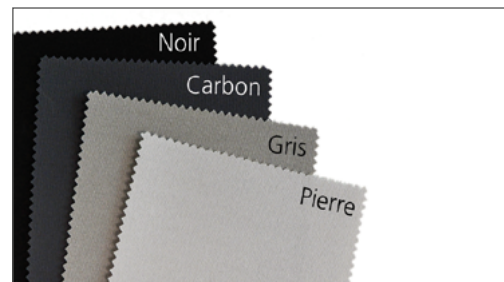
- Fully retractable and customizable widths up to 8 feet (2500 mm)
- Self adjusting within 5 mm
- Marine-grade stainless steel tubing
- High-quality, eco-friendly shade fabric
- Easy installation
- Easily retrofitted or integrated by boat builders
- Options for any style or size boat (with an overhead structure)
- Optional cover plate



Marine

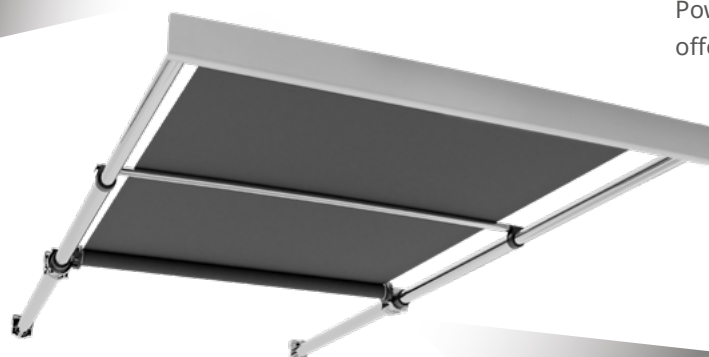
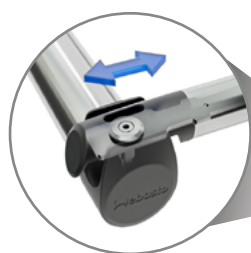
## Technical Specifications

Telescopic Shade 2500	
Telescope and cross beams material	High gloss polished stainless steel
Fabric material	Marine grade, Glen Raven/Dickson infinity
Fixation brackets material	(High gloss polished) Cast Stainless steel
Plastic covers	High grade UV-resistant PA6
Maximum system dimensions (W x L)	110 in x 140 in (2,800 mm x 3,560 mm)
Maximum fabric dimensions (W x L)	98 in x 78.7 in (2,500 mm x 2,000 mm)
Telescope tube diameters	1.9 in / 2.3 in / 2.7 in (50 mm / 60 mm / 70 mm)
Cross beam diameter	1.2 in (30 mm)
Cross beam adjustment (mm)	Self adjusting, Y, +/- 5
Fixation bracket adjustment (mm)	Adjustable, X,Y,Z, +/- 5
Drive system	Tube drive, 12 VDC
Spring system	Stainless steel gas spring with extra oil chamber
Weight (kg)	110 lbs (50 kg)

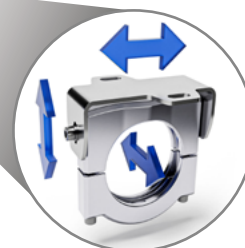


### Advantages:

- High-quality, eco-friendly shade fabric
- UV-, fade- and tear-resistant
- Optimal durability among extreme conditions
- Dry-quick material resists mold
- Easy to clean
- 4 fabric colors options (additional color options available)



Power switch and wire harness offered as an optional kit.



The development of the Telescopic Shade 2500 focused on the ease of installation, which is done in only a few simple steps. The base tubes are fixed to the boat with adjustable mounting brackets, while the stainless steel cross beams are self-adjusting, minimizing stress on the system.



Contact details

webasto.com