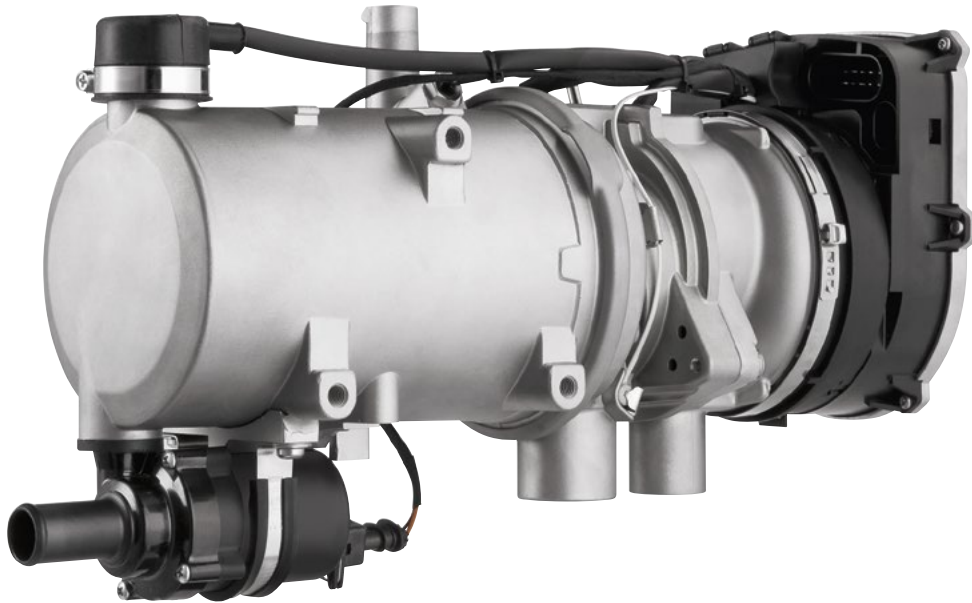


## Thermo Pro 90

Powerfull coolant heater for heavy commercial vehicles and machinery



The Thermo Pro 90 heater has been specially designed for use in heavy commercial and municipal vehicles, construction machinery and in minibuses. The main task of this powerful coolant heater remains a quick and efficient pre-heating of engines and machinery, thus securing their availability.

It also delivers enough heating output and thus guarantees reliable engine-independent heating of any vehicle type, even in harsh conditions.

With additional time-tested features, such as an automatic altitude adjustment, Arctic Start and continuous heating control, extreme environmental conditions can be managed easily.

In addition, the appliance can be operated very economically thanks to its low power consumption and extremely efficient use of fuel.

### Key benefits at a glance:

- Provides reliable engine-independent heating with up to 9.1 kW heating capacity
- Fast warm-up, even at the lowest temperatures, thanks to the Arctic Start function
- Very robust and most reliable heater with long service life
- Variants with automatic altitude adjustment up to 4,500m available
- Large heat output spread enables a wide range of applications
- Approved for operation with paraffinic diesel fuels (HVO, GTL)



Truck



Light vehicles



Bus



Off-Highway



Specialty vehicles

## Technical specifications

	Thermo Pro 90	
	Diesel	
ECE approval number ECE R122 (heating)	E1 00 0320	
ECE approval number ECE R10 (EMC)	E1 04 6196	
Heating capacity, part load / full load / boost (kW)	1.8 / 7.6 / 9.1	
Fuel consumption, part load / full load / boost (l/h)	0.2 / 0.90 / 1.1	
Nominal voltage (V)	12	24
Nominal power consumption with U4840 pump, part-load - full load/boost	37 / 83/90	
Fuels	Diesel DIN EN 590, Paraffinic fuel (HVO / GTL) DIN EN 15940, B100 FAME DIN EN 14214, Fuel oil EL DIN 51603-1	
Operating temperature range (°C)	-40 to +80	
Dimensions L x W x H (mm)	385 x 139 x 219	
Weight (kg)	4.9	
Permissible high altitude level above sea level (m)	Thermo Pro 90: up to 3,000 m Thermo Pro 90 HDD HA: up to 4,500 m	

	Coolant pump U4840
Nominal power consumption (W)	29
Volume flow against 0.31 bar (l/h)	700
Dimensions L x W x H (mm)	134 x 53 x 90
Weight (kg)	0.36

### Scope of delivery:

- Standard Thermo Pro 90
- Coolant pump U4840
- Fuel pump DP42
- Product documentation basic

### Installation kit universal:

- Standard electrical kit with wiring harness
- Exhaust silencer with standard pipes
- Intake silencer with pipe
- Set-off fuel line with mounting parts
- Water hoses and connectors

### Vehicle & Market Specific Kits

#### (Alternative to Standard Kit):

- Individual vehicle specific application
- Market specific heater variants on request

### Recommended control elements

#### Rocker Switch:

- Operation indicator and fault display by blink code
- Cover panel dimensions (L x W): 23 x 23 mm (drilling hole 20 mm, necessary)



### ThermoConnect:

- Convenient control of connected Webasto parking heater
- Info such as status of the heater, interior temperature and vehicle position
- Utilize GPS position of the vehicle
- Heating or ventilation mode



### MultiControl:

- Intuitive user interface
- 7-day timer function
- Ventilation function
- Quick and easy dashboard installation
- High altitude functionality of up to 3,000 m



### UniControl:

- Mounted via universal DIN slot
- Quick and intuitive operation
- Individual operating time between 10 - 120 minutes or continuous heating
- Instrument lighting & Ignition plus
- Suitable for use in vehicles for the transport of dangerous goods (ADR)



### Contact details

webasto.com