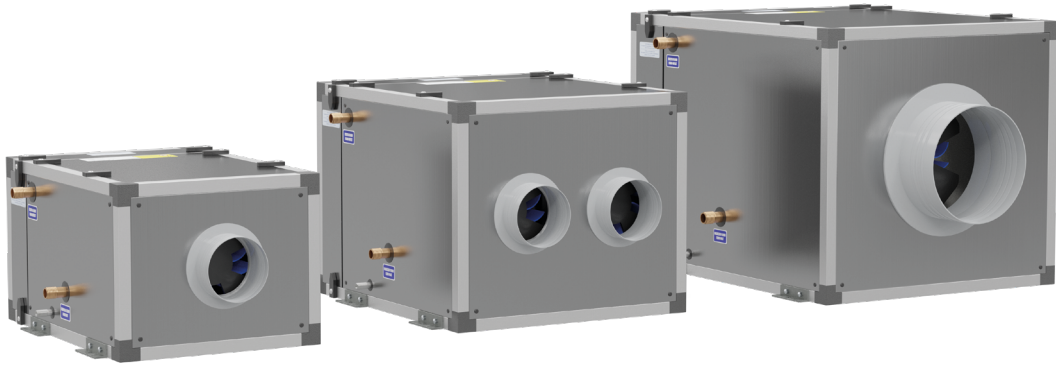


BlueCool F-Series

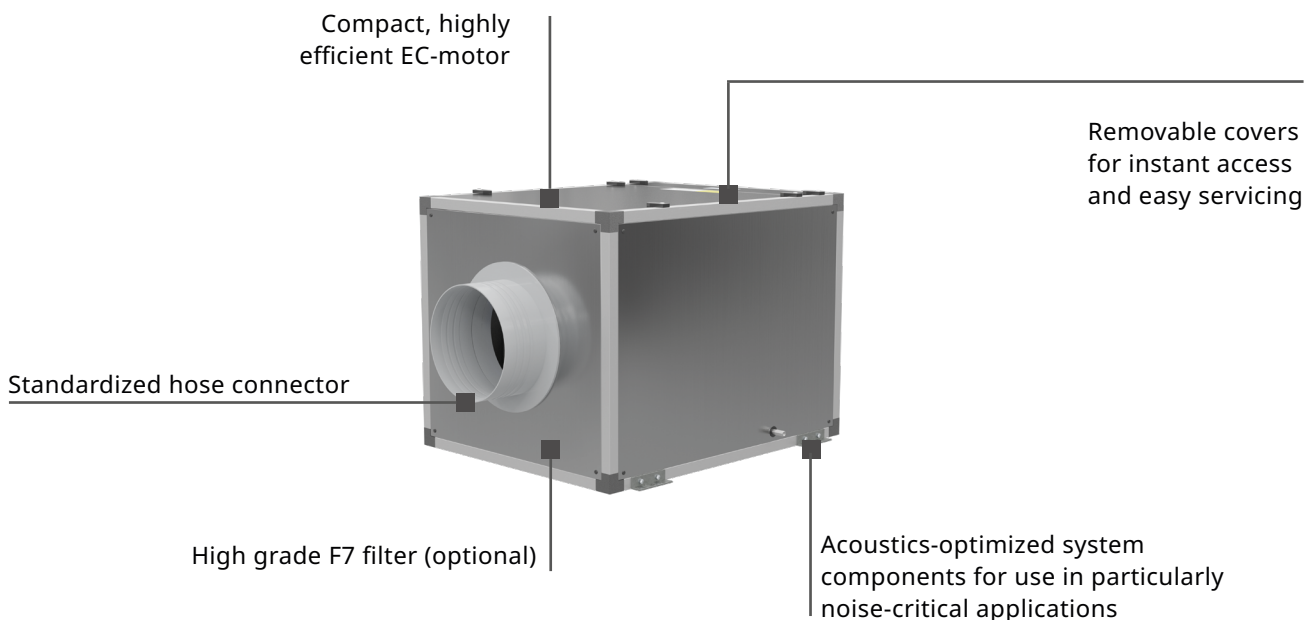


BlueCool F-Series fresh air systems are the ideal complement to your central chiller system. Fresh outside air is filtered and cooled before it is brought into the cabin at the ideal comfort temperature. Stale air is extracted and transported to the outside.

A sophisticated control concept of cooling and heating ensures the ideal condition of temperature and humidity.

Advantages at a glance:

- Higher air flow rate from 500 to 2000 m³/h with three variants each for fresh air and extract air.
- All units are operating with high efficiency EC-blower with high back pressure resistance.
- Improved climate control logic for constant supply air temperatures by means of integrated solenoid proportional valve and up to 20 kBTU/h electric auxiliary heating.
- Standardized and compact design.
- High efficiency F7 air filters available (optional).





Technical Specifications

	BlueCool F-Series FreshAir and Extract					
	F500 FreshAir	F1000 FreshAir	F2000 FreshAir	F500 Extract	F1000 Extract	F2000 Extract
Air flow (300 Pa) [m³/h]	500	1000	2000	500	1000	2000
Air flow (300 Pa) [cfm]	294	588	1177	294	588	1177
Cooling capacity [kBTU/h]	21	42	84	-	-	-
Cooling capacity [kW]	6.0	12.0	25.0	-	-	-
Heating capacity 'chilled' water [kBTU/h]	21	42	84	-	-	-
Heating capacity 'chilled' water [kW]	6.0	12.0	25.0	-	-	-
Heating capacity electric [kBTU/h]	5.0	10.0	20.0	-	-	-
Heating capacity electric [kW]	1.5	3	6	-	-	-
Heating capacity total [kBTU/h]	26	52	104	-	-	-
Heating capacity total [kW]	7.5	15	31	-	-	-
Voltage [V]	230	230	230	230	230	230
Frequency [Hz]	50/60	50/60	50/60	50/60	50/60	50/60
Current draw Cooling [A]	7.5	14.9	29.8	-	-	-
Current draw Heating [A]	7.5	14.9	29.8	-	-	-
Current Blower [A]	0.8	1.4	2.7	0.8	1.4	2.7
Power consumption heating [kW]	1.7	3.3	6.6	-	-	-
Power consumption cooling [kW]	1.7	3.3	6.6	-	-	-
Chilled Water connection [mm]	DN20	DN25	DN32	-	-	-
Chilled Water connection [Inch]	3/4	1	1 1/4	-	-	-
Minimum Chilled Water flow [l/min.]	18	37	73	-	-	-
Dimensions L x H x W [mm]	720 x 400 x 500	760 x 550 x 650	930 x 700 x 750	320 x 320 x 320	450 x 450 x 450	600 x 600 x 600
Dimensions L x H x W [inch]	28.3 x 15.7 x 19.7	29.9 x 21.7 x 25.6	36.6 x 27.6 x 29.5	12.6 x 12.6 x 12.6	17.7 x 17.7 x 17.7	23.6 x 23.6 x 23.6
Discharge connection diameter [mm]	150	2x 150	315	150	200	315
Discharge connection diameter [inch]	6	7.5	12.5	6	8	12.5
Suction connection diameter [mm]	150	200	315	150	200	315
Suction connection diameter [inch]	6	8	12.5	6	8	12.5
Weight Unit [kg]	42	65	110	25	35	60
Weight Electrical Box [kg]	7	7	7	-	-	-

